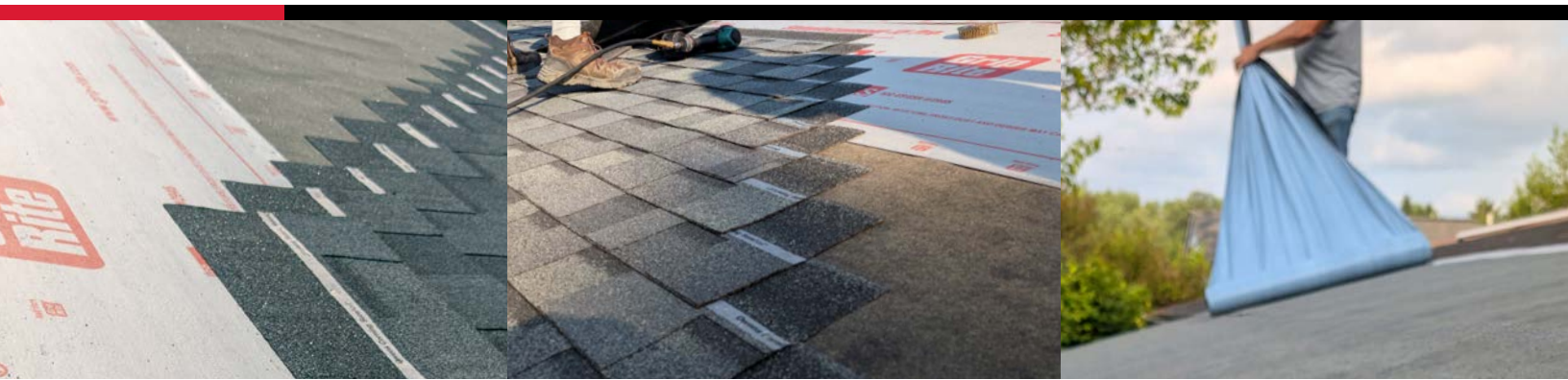




EAVE & VALLEY PROTECTOR



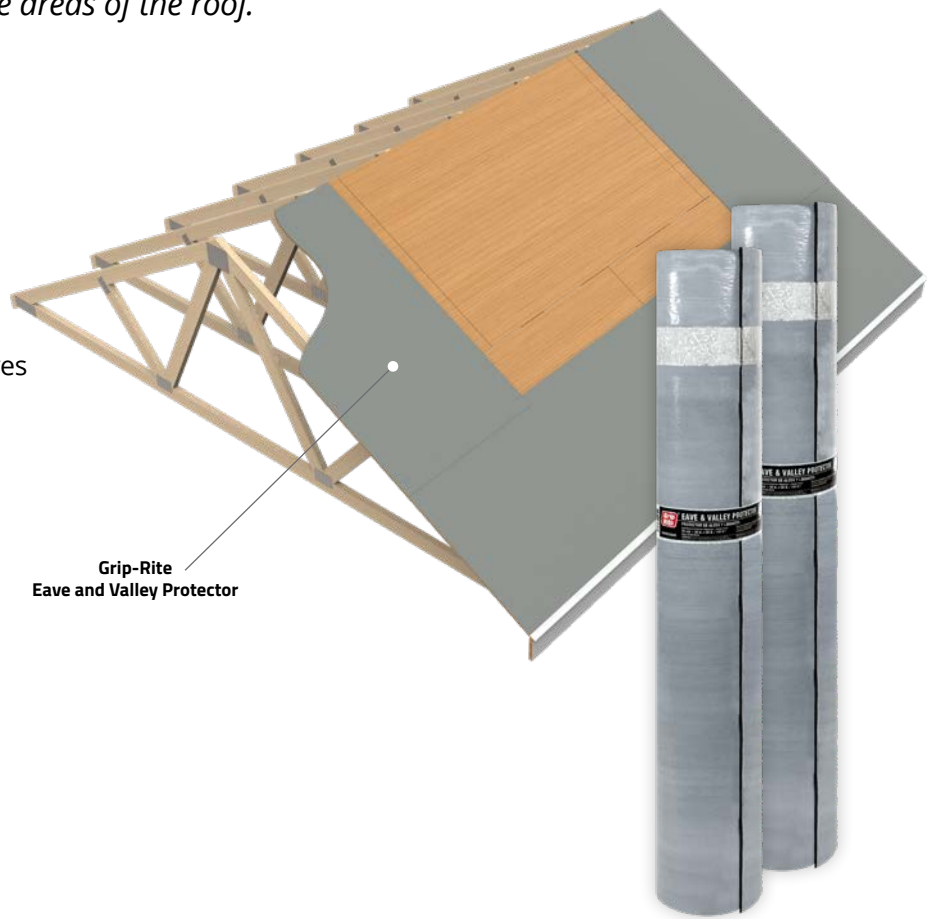
Grip-Rite® Eave & Valley Protector provides additional protection against roof damage caused by ice and water. This 53-mil self-adhesive membrane is composed of elastomeric bitumen with glass mat reinforcement to create a non-slip surface. Install beneath shingles, and along areas where water may collect. The easy-to-remove silicone treated split-back release sheet makes it easy to install and quickly provides protection to the most vulnerable areas of the roof.

FEATURES AND BENEFITS

- Easy to install with no primer required
- Non-slip, sanded finish
- Self-sealing around nails and screws
- Consistent thickness
- Requires no special tools
- Remains stable in outdoor temperatures
- Meets ASTM standards

APPLICATIONS

- Eaves
- Valleys
- Chimneys
- Vents
- Skylights
- Other similar areas



SKU	AREA	DIMENSIONS	ROLLS/PALLET	COVERAGE/ROLL	COVERAGE/PALLET
GRWR2SQNB	2 SQ	36" X 65'	36	195 ft. ²	7,020 ft. ²



INSTALLATION

- Install roof covering as soon as possible following membrane installation.
- Cover surface with plywood or OSB panels prior to the membrane installation.
- Although not mandatory, the use of a primer enhances the adhesion strength of self-adhesive membranes. Contact PrimeSource Building Products, Inc. at 800-676-7777 for a list of approved surfaces, their preparation and the use of primer.
- Minimum application temperature: 40°F

RESTRICTIONS

- Not recommended under metal roofing.
- If used on the whole roof surface, membrane should be applied over a proper ventilated space.
- Please refer to building codes for more information
- Do not apply directly onto wood planks.
- It is not recommended to use an elastomeric bitumen membrane directly on softwood boards or on flexible polyvinyl chloride.

PROPERTY	STANDARDS	EAVE & VALLEY PROTECTOR
Thickness	--	53 mil.
Roll Weight	--	60 lbs.
Top Face	--	Sand
Underface	--	Silicone Release Film (Split-Back)
Reinforcement	ASTM D1970	Glass Mat
Tensile Strength, MD/XD	ASTM D1970	61 / 46 LBF/in.
Ultimate Elongation, MD/XD	ASTM D1970	16 / 14%
Adhesion to Plywood, 75.2° F	ASTM D1970	14.5 LBF/ft.
Thermal Stability, 14 days @ 158° F	ASTM D1970	<2.5 mm (<0.1 in.)
Low Temperature Flexibility	ASTM D1970	Pass at -20°F/-29°C
Tear Resistance	ASTM D1970	90 / 79 LBF
Nail Sealability	ASTM D1970	Pass
Static Puncture	ASTM D5602	31 LBF

LBF = pounds of force/foot
Specifications subject to change without notice.

PRIME**SOURCE**
BUILDING PRODUCTS, INC.

A PrimeSource Brands Company



Contact your PrimeSource® Building Products representative to order today.
800-676-7777 | primesourcebp.com

Grip-Rite® Eave & Valley Protector is exclusively distributed by PrimeSource® Building Products, Inc. 1321 Greenway Drive, Irving, TX 75038-2504.
Visit grip-rite.com or call 800-676-7777 for details, warranty information and limitations. Pricing and availability are subject to change without notice.
© 2025 PrimeSource® Building Products, Inc. All Rights Reserved.

GREVPSS-072025-739100