

OPERATOR'S MANUAL

AND PARTS LIST

MODEL GR150 JOIST HANGER NAILER
MODEL GR250 JOIST HANGER NAILER



Distributed By

PRIMESOURCE[®]
BUILDING PRODUCTS, INC.

www.grip-rite.com

TABLE OF CONTENTS

TABLE OF CONTENTS ----- 2

SPECIFICATIONS ----- 3

SAFETY ----- 4

TOOL PARTS ----- 8

PARTS DESCRIPTION ----- 9

LOADING FASTENERS ----- 10

OPERATION ----- 11

GR150 PARTS SCHEMATIC ----- 12

GR150 PARTS LIST ----- 13

GR250 PARTS SCHEMATIC ----- 14

GR250 PARTS LIST ----- 15

MAINTENANCE ----- 16

TROUBLESHOOTING ----- 17

WARRANTY ----- 18



IMPORTANT SAFETY INFORMATION

You must read this entire manual and familiarize yourself with all safety, operating, and service instructions before loading, handling, or using your tool. When used correctly, pneumatic fastening tools provide a lightweight, powerful, and safe means of fastening. Used improperly, these tools can cause serious injury to you and those around you.

SPECIFICATIONS

SPECIFICATIONS

MODEL	GR150	GR250
FASTENER LENGTH	1 1/2"	1 1/2" - 2 1/2"
FASTENER DIA.	.131 - .148"	.131 - .162"
COLLATION ANGLE	33°	33°
COLLATION TYPE	Paper/Plastic	Paper/Plastic
MAGAZINE CAPACITY	30 Nails	30 Nails
MAX AIR PRESSURE	120 psi	120 psi
MIN AIR PRESSURE	100 psi	100 psi
TOOL WEIGHT	4.4 lbs.	4.8 lbs.
TOOL LENGTH	9.5"	11"
TOOL HEIGHT	12.25"	11.75"
TOOL WIDTH	3.75"	3.75"
TRIGGER TYPE	AUTO	AUTO
AIR CONNECTION	QUICK CONNECT	
LUBRICATION	10W Air Tool Oil (Provided)	

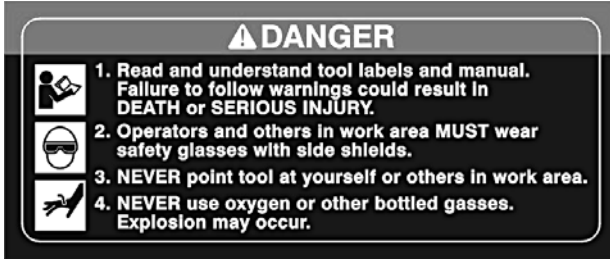
For best results, use only Grip-Rite™ collated fasteners.

FASTENER SELECTION CHART					
SIZE	BOX QTY.	BRIGHT SKU	GALVANIZED SKU	FITS GR150	FITS GR250
1-1/2 x .131" (38 x 3.4 mm)	4M	GRJSN131	N/A	X	X
1-1/2 x .148" (38 x 3.8 mm)	4M	GRJSN112	GRJSN112HG	X	X
2-1/2 x .148" (64 x 3.8 mm)	4M	GRJSN212	GRJSN212HG		X
2-1/2 x .162" (64 x 4.2 mm)	4M	GRJSN162	GRJSN162HG		X

SAFETY




SAFETY LABELS

This pneumatic fastening tool includes a warning label to help remind you of important safety information when operating the tool. The safety label must be legible at all times, and must be replaced if it becomes worn or damaged.



SAFETY SYMBOLS

The safety symbols on the safety label provide a visual reminder of basic safety rules, and the personal injury hazard that may arise if all safety and operating instructions are not followed. Make sure you understand the meaning of each of these symbols, and protect yourself and others by obeying all safety and operating instructions.

SYMBOL	DESCRIPTION
	READ THE MANUAL - The manual contains important safety and operating instructions that must be followed. All tool users must read the manual before using the tool.
	WEAR SAFETY GLASSES - Tool operator and bystanders must wear safety glasses with side shield that meet ANSI Z87.1 requirements.
	RISK OF PERSONAL INJURY - Failure to follow all safety and operating instructions, or misuse of the tool, can result in serious injury to tool operator and bystanders.

SAFETY INSTRUCTIONS



WEAR SAFETY GLASSES

Always wear safety glasses with side shields that meet ANSI Z87.1 requirements when operating the tool. Make sure all others in work area wear safety glasses.



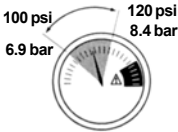
WEAR HEARING PROTECTION

Wear hearing protection to protect your hearing from noise. Prolonged exposure to loud noise can result in hearing loss.



NEVER OPERATE THE TOOL WITH OXYGEN OR OTHER BOTTLED GASES

Oxygen and other reactive or high-pressure bottled gases can cause the tool to explode. Use clean, dry regulated compressed air from a properly operating air compressor.



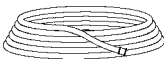
DO NOT EXCEED MAXIMUM RECOMMENDED OPERATING AIR PRESSURE OF 120 PSI/8.4 Bar.

Exceeding the maximum recommended air pressure can cause the tool housing to burst, or cause premature failure of components.



NEVER CONNECT THE TOOL TO AN AIR SUPPLY THAT HAS THE POTENTIAL TO EXCEED 180 PSI/12.4 Bar.

Using a regulated air supply with a line or tank pressure greater than 180 psi can cause the tool to burst if the air line regulator fails suddenly.



USE AN AIR HOSE RATED FOR 180 PSI/12.4 Bar OR GREATER

Always use air hose rated to handle 180 psi or the maximum potential pressure of the air supply.

ONLY USE A RELIEVING-TYPE AIR COUPLING IN THE TOOL AIR INLET OPENING.

Use of a non-relieving air coupling on the tool can trap air inside the tool housing, and allow the tool to drive a fastener even after the air hose has been disconnected.

SAFETY

SAFETY INSTRUCTIONS

DO NOT ATTEMPT TO OPERATE THE TOOL IF THE TOOL'S OPERATING CONTROLS HAVE BEEN MODIFIED OR ARE NOT WORKING PROPERLY.

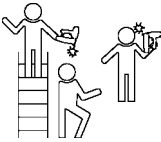
Attempting to use a tool with modified or malfunctioning trigger or workpiece contact can result in a fastener being driven unintentionally.

USE CORRECT FASTENERS

Only use the correct fastener for the tool. Using fasteners with incorrect specifications can jam the tool or cause serious injuries.

USE THE CORRECT FASTENERS FOR THE APPLICATION.

Using the wrong fasteners can cause the workpiece to split and allow the fastener to fly free.



KEEP TOOL POINTED IN A SAFE DIRECTION WHEN IN USE

Never point the tool at yourself or anyone else when in use.

DO NOT DEPRESS TOOL NOSE WHEN LOADING FASTENERS

Depressing the tool nose during loading can result in tool actuation and an unintentional fastener drive

AVOID DRIVING FASTENERS INTO KNOTS, ON TOP OF OTHER FASTENERS, AT WORKPIECE EDGES, OR INTO BRITTLE MATERIALS.

Driving fasteners into extremely hard materials, or driving into workpiece edges, can cause fasteners to deflect away from the workpiece. Flying fasteners can cause serious injuries.

SAFETY INSTRUCTIONS

KEEP HANDS AND BODY PARTS AWAY FROM AREA BEING FASTENED.

Fasteners can deflect and turn as they are being driven into the workpiece, and penetrate fingers, hands, and other body parts that may be in the fastening area.



DO NOT OVERREACH OR WORK WHILE ON UNSTABLE FOOTING

If you lose your balance while fastening, you could drive a fastener into yourself or a bystander.

DO NOT USE TOOL IF TOOL MALFUNCTIONS OR BEGINS LEAKING AIR.

Operating a malfunctioning tool can result in an injury to yourself or others.

DISCONNECT THE TOOL FROM THE AIR SUPPLY TO RELOAD, CLEAR JAMS, OR PERFORM MAINTENANCE.

Never attempt to reload a tool, clear a jam, or perform maintenance without first disconnecting the air supply.

NEVER LEAVE A LOADED, PRESSURIZED TOOL UNATTENDED

A loaded, pressurized tool could be picked up or handled by someone who is unfamiliar with the tool or that has not read the tool manual.

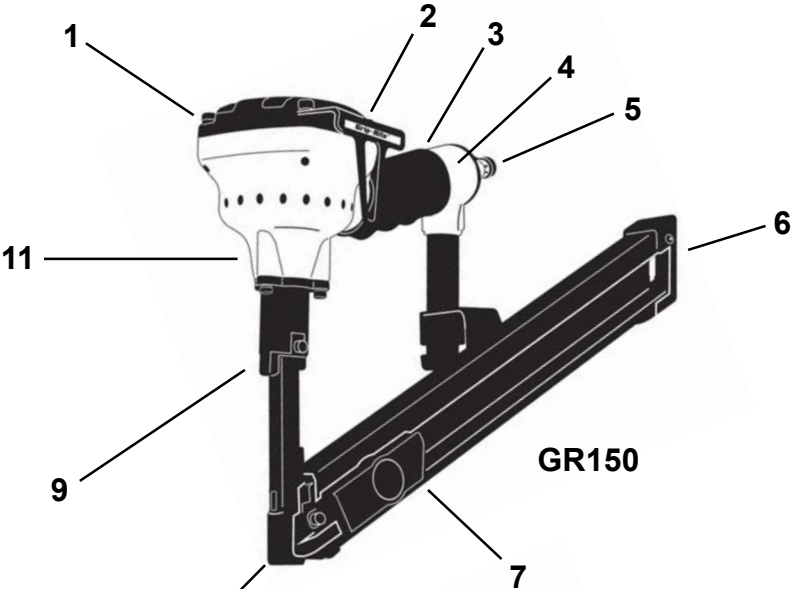
KEEP TOOLS OUT OF THE REACH OF CHILDREN

Place the tool back in the tool box after use, and store the tool out of reach.

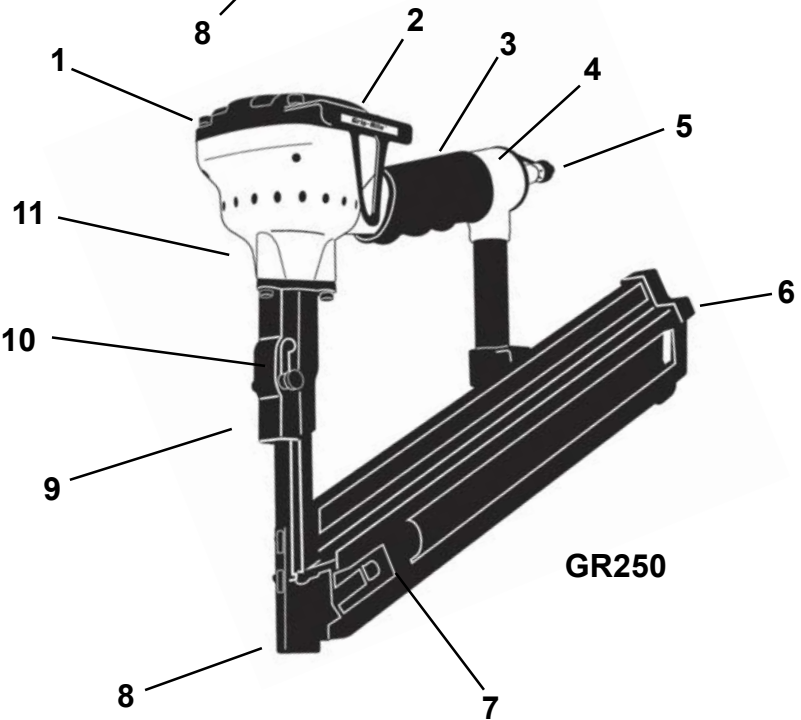
DO NOT MODIFY TOOL

Modifications can cause a tool to be unsafe and can cause the tool to operate improperly.

DESCRIPTION



GR150



GR250

PART DESCRIPTIONS

1. **Cylinder Cap** - Covers valve and piston assembly.
2. **Belt Hook** - Convenient belt hook keeps tool within easy reach when both hands are needed for placement and positioning of joist hangers.
3. **Handle** - Cushioned handgrip provides comfortable operation.
4. **Safety Warning Label** - Provides important safety reminders that must be followed whenever handling, operating, or servicing the tool.
5. **Air Coupling** - Quick-disconnect male coupling allows quick connection to air hose. Dust cap keeps dirt out when tool is not in use.
6. **Rear Load Nail Magazine** - Holds fasteners securely and protects nail strips from damage. Dual loading slots on GR250 allow use of 1 1/2" or 2 1/2" nails
7. **Spring-loaded Pusher** - Provides positive fastener feeding in all tool positions.
8. **Nose** - Narrow profile design permits visual nail positioning for accurate placement.
9. **Automatic Actuation** - Tool actuates when nail in driving position is pressed against work surface, stops when pressure is released.
10. **2-Position Nail Length Adjustment** - (Model GR250 Only) - Permits efficient driving of both 1 1/2" and 2 1/2" nails.
11. **Tool Housing** - Contains nail driver components.

Metric Hex Wrenches - Included with tool to allow tightening of metric screws. Keep tools in tool case for periodic tightening of screws.

Air Tool Oil - Lightweight oil formulated for use in air tools provides proper lubrication to o-rings and internal parts.

Safety Goggles - Provide required eye protection

OPERATION

LOADING FASTENERS

LOADING INSTRUCTIONS

DANGER

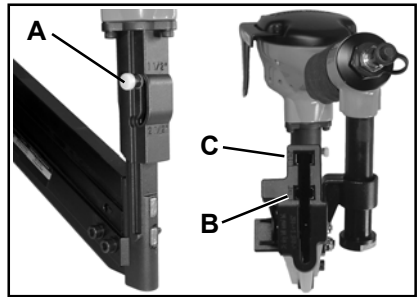
The model GR150 and GR250 tools are automatically actuated when the nail in driving position is pressed against the work surface. Tools continue to deliver multiple hammer blows until the nail is fully driven or tool is lifted off work surface. Never press tool nose down unless it has been properly positioned to drive a nail into a safe work surface.

1a. **Model GR250 Only:**

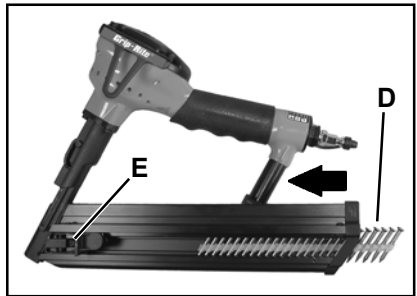
Set nose position for driving desired nail length:

Depress and hold nose. Push spring-loaded adjustment pin button (A) in, and slide pin into correct position for nail length being used. Release button, and allow nose to extend.

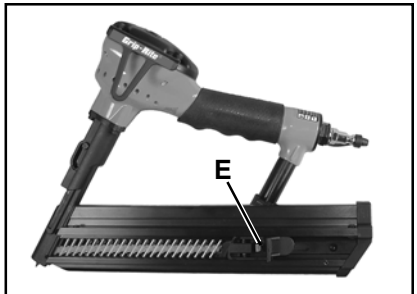
Insert strip of 1 1/2" long nails using lower slot (B), or 2 1/2" nails using upper slot (C), and allow nails (D) to slide toward tool nose.



1b. **Model GR150:** Insert nail strip (D) into rear of magazine, and allow nails to slide toward tool nose.



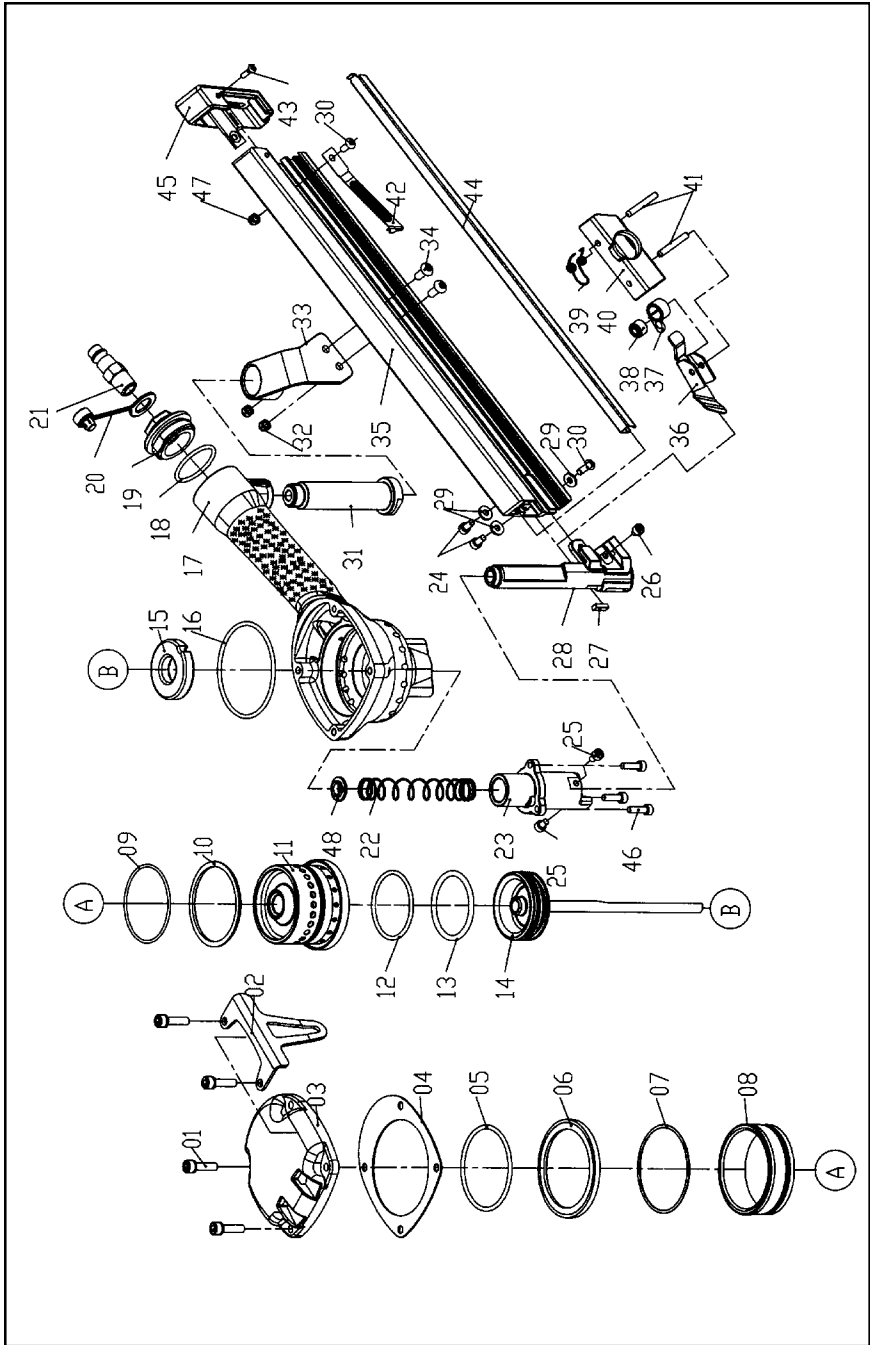
2. Depress pusher lever, and pull pusher (E) back to rear of nail strip. Release lever, and slide pusher forward against nails.
3. Tool is now loaded and ready to be connected to an air supply for operation.



OPERATION

1. Connect tool to air supply using quick-connect coupling.
2. Hold the tool securely using the handgrip. Do not depress tool nose until tool is in driving position and you are ready to drive a fastener.
3. Position the nose of the tool on the workpiece, placing the nail in driving position at the desired fastener driving location. If nail is being driven to secure a joist hanger or other metal connector, make sure nail is centered in punched hole in joist hangers.
4. Press the tool nose down firmly against the work surface, and continue pushing until the nail is fully driven. Do not lift the tool from the work surface during nail driving, or another nail may be fed into the tool nose.
5. After the nail is fully driven, lift the tool off of the work surface, and place the tool in position for the next nail to be driven.
6. Repeat steps 2 through 4 until all desired nails have been driven.
7. Reload tool as needed, using Grip-Rite™ nails for best results.
8. Increase air pressure to drive into harder materials. Reduce air pressure to drive into softer materials. For longest tool and part life, always use the lowest air pressure necessary to drive fasteners.
9. Disconnect tool from air supply when nailing is completed.

GR150 PARTS SCHEMATIC

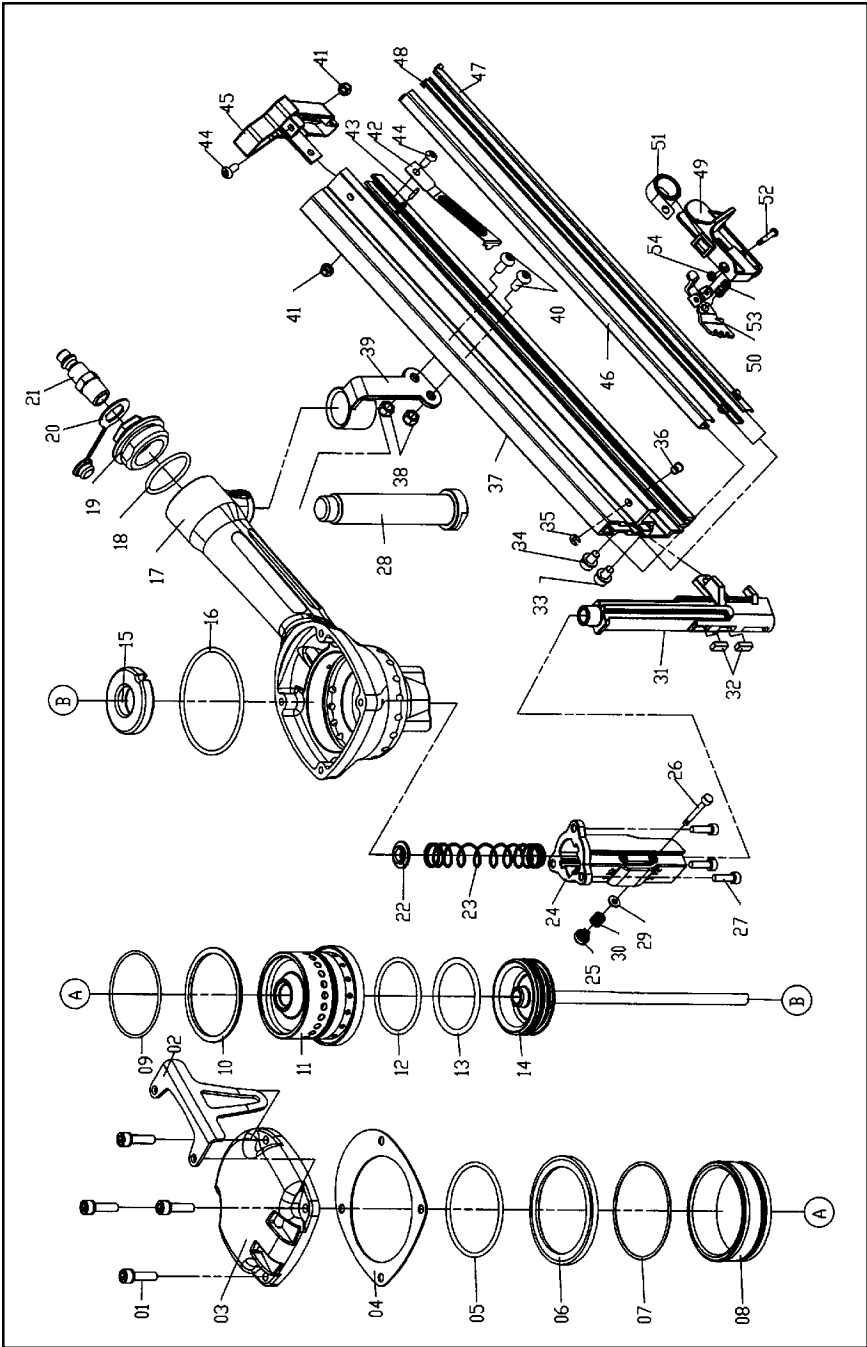


GR150 PARTS LIST

ITEM	P/N	DESCRIPTION	ITEM	P/N	DESCRIPTION
1	GRBN17	BOLT	25	GRBN267	BOLT
2	GRBN18	HANGER	26	GRBN31	BOLT
3	GRBN19	CAP	27	GRBN268	MAGNET
4	GRBN270	GASKET	28	GRBN269	NOSE PIECE
5	GRBN271	O-RING	29	GRBN33	WASHER
6	GRBN20	COLLAR	30	GRBN34	BOLT
7	GRBN272	RING	31	GRBN50	SHAFT
8	GRBN21	SPACER	32	GRBN7	LOCK NUT
9	GRBN273	O-RING	33	GRBN51	BRACKET
10	GRBN22	SEAL	34	GRBN35	BOLT
11	GRBN23	CYLINDER	35	GRBN36	MAGAZINE
12	GRBN275	O-RING	36	GRBN37	PUSHER
13	GRBN276	O-RING	37	GRBN38	SPRING
14	GRBN24	DRIVER	38	GRBN39	DRUM
15	GRBN25	BUMPER	39	GRBN40	SPRING
16	GRBN277	O-RING	40	GRBN41	END COVER
17	GRBN26	BODY	41	GRBN42	ROLL PIN
18	GRBN278	O-RING	42	GRBN43	NAIL STOP
19	GRBN27	END CAP	43	GRBN44	BOLT
20	GRBN279	DUST COVER	44	GRBN45	CHANNEL
21	GRBN28	AIR PLUG	45	GRBN46	COVER
22	GRBN29	SPRING	46	GRBN52	BOLT
23	GRBN30	GUIDE	47	GRBN47	LOCK NUT
24	GRBN5	BOLT	48	GRBN48	DRIVER GUIDE

- A GRDAK700 Driver Maintenance Kit
- B GRRBK700 O-Ring Maintenance Kit
- C GR150250MAN Operator's Manual
- D GR150CASE Tool Case

GR250 PARTS SCHEMATIC



GR250 PARTS LIST

ITEM	P/N	DESCRIPTION	ITEM	P/N	DESCRIPTION
1	GRBN17	BOLT	28	GRBN59	SHAFT
2	GRBN18	HANGER	29	GRBN60	FLAT WASHER
3	GRBN19	CAP	30	GRBN61	POSITIONING SPRING
4	GRBN270	GASKET	31	GRBN62	NOSE PIECE
5	GRBN271	O-RING	32	GRBN32	MAGNET
6	GRBN20	COLLAR	33	GRBN63	HEX. SOC. HD. BOLT
7	GRBN272	O-RING	34	GRBN64	FLAT WASHER
8	GRBN21	CYLINDER SPACER	35	GRBN4	E-RING
9	GRBN273	O-RING	36	GRBN65	BRACKET
10	GRBN274	SEAL	37	GRBN66	MAGAZINE A
11	GRBN23	CYLINDER	38	GRBN7	LOCK NUT
12	GRBN275	O-RING	39	GRBN67	BRACKET
13	GRBN276	O-RING	40	GRBN35	HALF ROUND HD. HEX. BOLT
14	GRBN53	DRIVER UNIT	41	GRBN3	LOCK NUT
15	GRBN25	BUMPER	42	GRBN68	STOP NAIL PLATE
16	GRBN277	O-RING	43	GRBN69	SPRING PIN
17	GRBN26	GUN BODY UNIT	44	GRBN34	HALF ROUND HD. HEX. BOLT
18	GRBN278	O-RING	45	GRBN70	PROTECTING HOOD COVER
19	GRBN27	END CAP	46	GRBN71	STEEL CHANNEL
20	GRBN279	DUST COVER	47	GRBN72	STEEL CHANNEL
21	GRBN28	AIR PLUG	48	GRBN73	STEEL CHANNEL
22	GRBN48	DRIVER GUIDE	49	GRBN74	PROTECTING HOOD COVER
23	GRBN54	SPRING	50	GRBN75	PUSHER
24	GRBN55	GUIDE BOX	51	GRBN76	SPRING
25	GRBN56	LATCH SPRING BUSHING	52	GRBN2	FIXED PIN
26	GRBN57	PIN	53	GRBN77	SPRING
27	GRBN58	HEX SOC. HD. BOLT	54	GRBN1	URETHANE RETAINER

- A GRDAK800 Driver Maintenance Kit
- B GRRBK800 O-Ring Maintenance Kit
- C GR150250MAN Operator's Manual
- D GR250CASE Tool Case

MAINTENANCE

MAINTENANCE

DANGER

Always disconnect tool from air supply before performing any service on tool. Correcting a problem while the tool is pressurized may result in injury from nail drive or tool operation.

Your tool will last longer and perform better if periodic maintenance is performed. Please use the information below to keep your tool operating in top condition.

Lubrication

Disconnect tool from the air supply and remove all fasteners. Apply three drops of air tool oil (provided) in the air inlet before each use, and after every 1000 fasteners driven. If the tool will be used outside in the winter, use a winter grade air tool oil to help keep frost from forming inside the tool. Do not use other types of lubricants on this tool, as other lubricants may contain chemicals harmful to o-rings and other tool components.

Cleaning

Disconnect tool from the air supply and remove all fasteners. Brush tool off using a parts cleaning brush or clean rag. Brush out dirt and debris from magazine and tool nose.

Daily Inspection

- Check for broken, damaged, or excessively worn parts, and repair or replace as needed.
- Check for air leaks at cap, and nose. Disconnect tool from air supply immediately if leaks are present, and see dealer for service.
- Make sure all screws are tightened securely.

TROUBLESHOOTING

TOOL TROUBLESHOOTING

DANGER

Always disconnect tool from air supply before performing any service on tool. Correcting a problem while the tool is pressurized may result in injury from nail drive or tool operation.

Your pneumatic fastening tool has been designed for long life and trouble-free operation. However, if operating problems arise, please use the troubleshooting information below to determine how to remedy the problem.

FASTENER DRIVING PROBLEMS

PROBLEM	CORRECTIVE ACTION
Fasteners do not drive completely.	Increase air pressure. Do not exceed 120 psi. Add 2 - 3 drops of air tool oil to inlet.
Fasteners do not drive completely after air pressure is increased.	Driver blade worn or broken. See dealer for replacement.
Tool leaks air.	Check for source of leak, and tighten fittings and screws as required. Discontinue using tool if air leaks after tightening. Contact your dealer.
Fastener or debris jammed in tool nose, preventing tool from operating.	Pull pusher back, and remove nails from magazine. Remove debris or fastener from nose. Check nose for obstructions, and clean as needed. Reload tool.

WARRANTY

PRIMESOURCE®

GLOBAL REACH. HOMETOWN SERVICE.™

LIMITED WARRANTY APPLICABLE TO PNEUMATIC TOOLS AND COMPRESSORS

GRIP-RITE® brand pneumatic tools bearing Serial Numbers 19070001 and above; or Serial Numbers 19400001 and above, are warranted to be free from defects in workmanship and materials for seven years from the date of purchase.

Rubber o-rings, bumpers, seals, driver blades, dipsticks, and air filters are excluded from this warranty. Pneumatic tools bearing Serial Numbers not reference above, including all legacy branded tools or “silver body” tools, are covered by a three-year warranty.

All compressors, regardless of body color, are warranted to be free from defects in materials and workmanship for one year from the date of original purchase.

If your compressor or GRIP-RITE™ pneumatic tool demonstrates a defect in workmanship or materials during the warranty period, it may be returned to PRIMESOURCE® for repair, and if it is not repairable, PRIMESOURCE® will replace it.

These warranties will not apply if:

- The original receipt (or copy), showing the original purchase date, is not provided with the tool or compressor sent in for warranty repair
- The tool or compressor has been misused, abused or improperly maintained
- Alterations have been made to the original tool or compressor
- Repairs have been attempted or made to the original tool or compressor by any entity other than a proprietary PRIMESOURCE® service/warranty center or authorized service/warranty center
- Non-GRIP-RITE TOOLS™ / GRIP-RITE COMPRESSORS™ parts have been used
- The tool has suffered any physical damage due to the use of non-PRIMESOURCE® approved fasteners. The only approved fasteners include the following brands TIMCO, GRIP-RITE
- Repairs are required due to normal wear and tear on the product. Normal wear and tear are not warrantable conditions
- The tool or compressor has been inadequately packaged leading to damage in transit to the service/warranty center

THESE WARRANTIES ARE IN LIEU OF ALL OTHER WARRANTIES EXPRESS OR IMPLIED. PRIMESOURCE® EXPRESSLY DISCLAIMS ALL OTHER WARRANTIES, INCLUDING WARRANTIES OF MERCHANTABILITY AND FITNESS FOR A PARTICULAR PURPOSE (EXCEPT AS MAY OTHERWISE BE PROVIDED BY LAW).

PRIMESOURCE® DISCLAIMS LIABILITY FOR INDIRECT, INCIDENTAL, OR CONSEQUENTIAL DAMAGES RELATED TO THE SALE OR USE OF ITS PRODUCTS BOTH DURING AND AFTER THE WARRANTY TERM.

These warranties give you specific legal rights, and you may also have other rights, which vary, from state to state.

(continued on next page)

PNEUMATIC TOOL/COMPRESSOR SERVICE INFORMATION

Should any mechanical problems develop during the life of your equipment, the following options are available for service and parts:

- Call (800) 676-7777 to be routed to the nearest GRIP-RITE™ distribution center and directed to the nearest authorized service/warranty center
- Log on to our website at www.grip-rite.com to find a list of our authorized service centers
- Contact the PRIMESOURCE® National Service Center directly at Phone: (800) 207-9259 or Fax: (800) 207-9614

STEPS TO TAKE WHEN SHIPPING TOOLS

- Adequately package the product to avoid damage in transit (in the case of pneumatic tools, the original blow mold plastic carrying case is considered adequate packaging)
- Provide the original or copy of the receipt showing the original purchase date
- Insure your shipment with the shipping company. PRIMESOURCE® will not be responsible for any tool or compressor that is lost or damaged by the shipper.

**USE GENUINE GRIP-RITE®
FASTENERS FOR BEST
PERFORMANCE**



PRIME SOURCE®
BUILDING PRODUCTS, INC.

www.grip-rite.com

GR150250MAN