



Grip-Rite ProWrap® Butyl & Flex Flashing Tape Installation Instructions

BEFORE INSTALLING GRIP-RITE PROWRAP® BUTYL & FLEX FLASHING TAPE

- Ensure that the final installation methods, sequencing, assembly and site conditions comply with applicable certifications, building codes and industry standards, including ASTM E2112 and AAMA 2400.
- Apply Grip-Rite ProWrap® Butyl & Flex Flashing only when the surface is clean, dry, and free of frost or contaminants, with temperatures above 20°F. Before installation, clear the substrate of any loose particles, dust, or debris. The surface should be solid and even, with no gaps, damage, or unsupported sections that could affect adhesion.
- To determine the length of flashing for each rough opening, calculate in accordance with AAMA 2400. A reference chart is provided below but should be verified against current standard editions by the installer.
- Water-resistive barrier (“WRB”) refers to housewrap, building paper/felt, or other material certified to ASTM E2556 by an accredited listing agency.
- The installation of windows and siding should be according to the standards set by the window or siding manufacturer, respective industry standards and best practices.
- Priming is generally unnecessary for clean, dry surfaces and should only be used if adhesion issues persist, using an appropriate construction-grade primer following the manufacturer’s directions for most substrates provided they are clean and dry. However, on irregular concrete, masonry or in instances where adhesion is not adequate, apply a spray applied primer, following the manufacturer's installation guidelines for use.

INSTALLATION LOCATION LENGTH FORMULA				
SILL FLASHING ROUGH OPENING WIDTH	+	(2 X FLASHING TAPE WIDTH)		
JAMB FLASHING ROUGH OPENING HEIGHT	+	(2 X FLASHING TAPE WIDTH)	-	1 INCH
HEAD FLASHING ROUGH OPENING WIDTH	+	(2 X FLASHING TAPE WIDTH)	+	2 INCHES

Installation instructions begin on next page.

For example, if a 9-inch-wide flashing tape is being applied, the Head Flashing cut length shall be determined as follows:

For a 36-inch rough opening width. 36-inches + (2 x 9-inches) + 2-inches = 56-inches

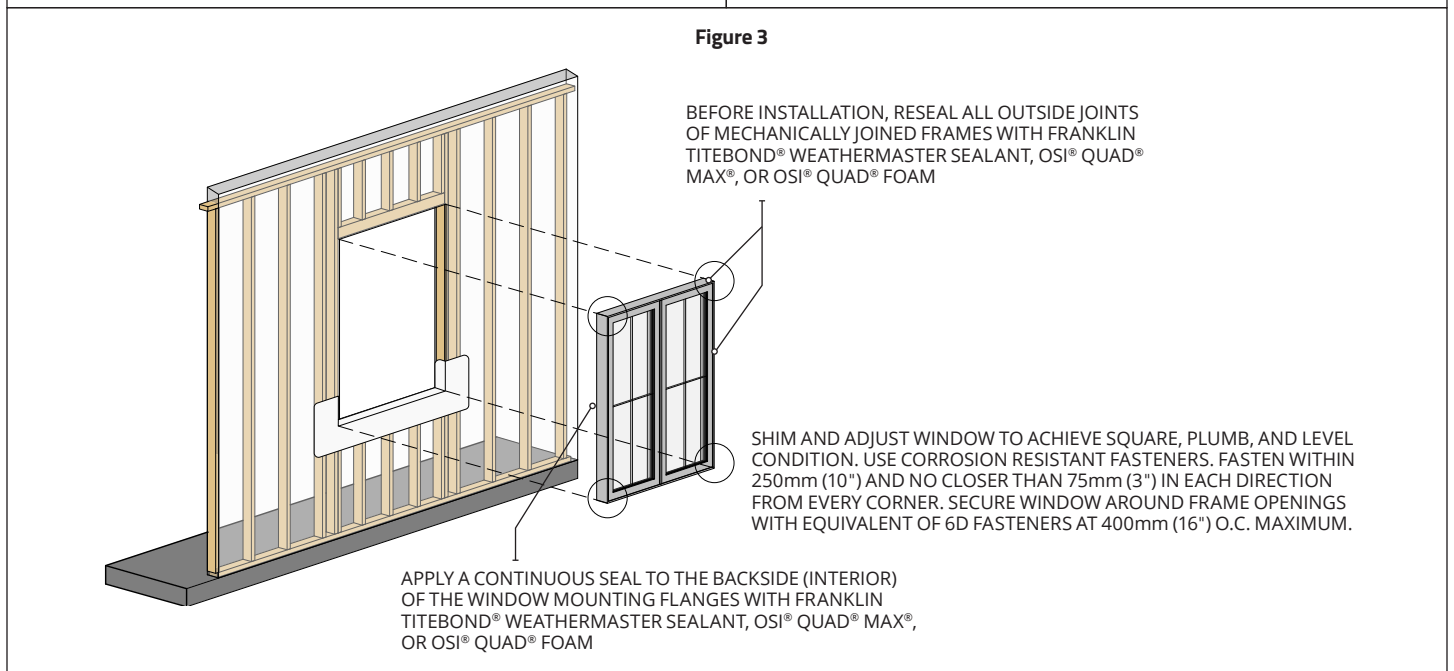
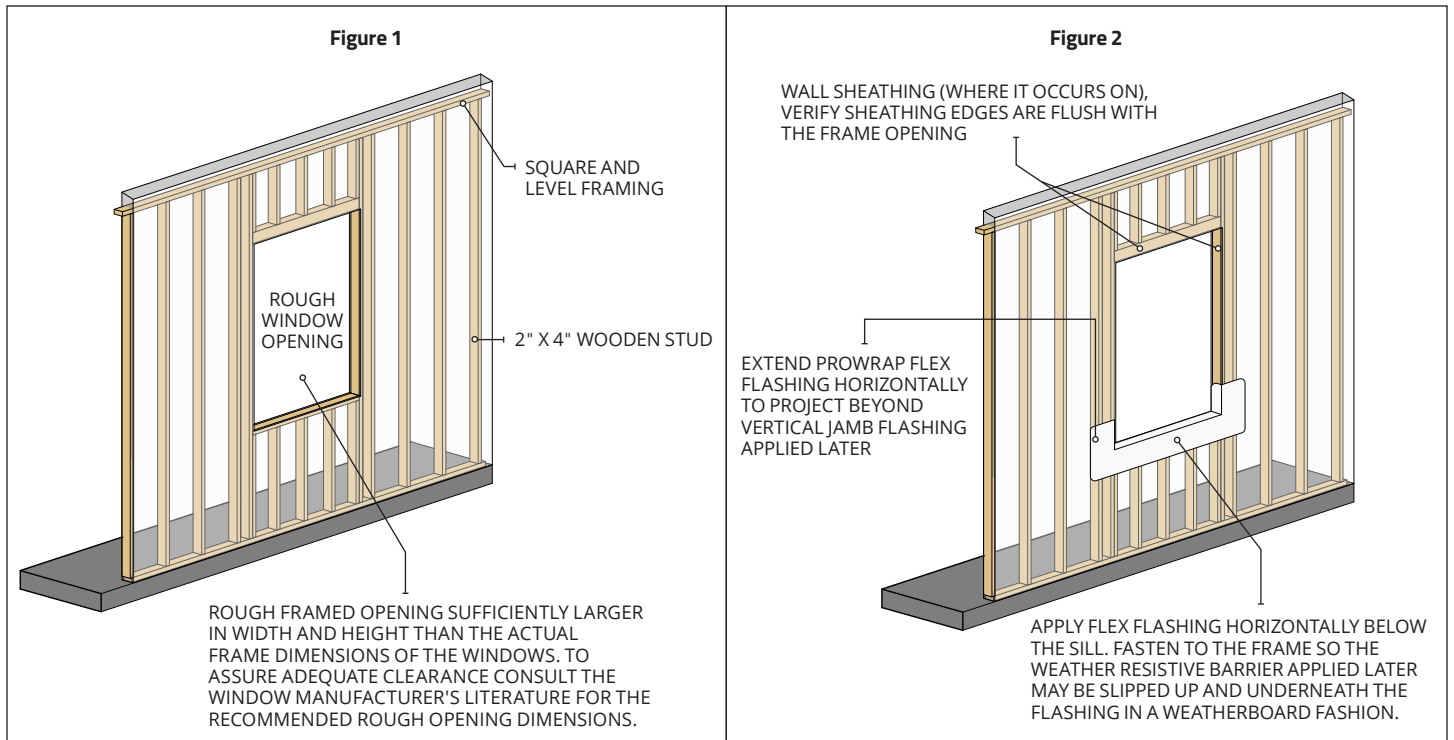
- Flashing should be rolled into place or applied with pressure using a smooth, non-damaging dull edge to ensure adequate adhesion with the substrate. Applying pressure by hand alone will not guarantee adequate adhesion.
- It is the responsibility of the installer to ensure that the water-resistive barrier, windows, sealants and flashings shall be constructed in a manner that prevents the accumulation of water within the wall assembly by providing a means of draining to the exterior water that penetrates the exterior cladding such that all laps shed water. All overlaps should be shingle fashion, working from the low point to the high point of the wall assembly.
- Vertical terminations may be mechanically fastened to hold in place, as necessary.

WINDOW INSTALLATION METHOD A: BEFORE WEATHER-RESISTIVE BARRIER

1. Pre-cut the Grip-Rite ProWrap® Butyl & Flex Flashing using the formulas provided in section 'BEFORE INSTALLING GRIP-RITE PROWRAP® BUTYL & FLEX FLASHING TAPE'. (Fig. 1)
2. Install the Grip-Rite ProWrap® Butyl Flex Flashing by removing the inside section of the release liner. Position Grip-Rite ProWrap® Butyl Flex Flashing along the horizontal sill, extending the outer edge of tape by 4-inches past the exterior edge of the rough opening, adhering the Grip-Rite ProWrap® Butyl Flex Flashing with a minimum of 6" up each jamb. Roll or press firmly the adhesive section of

the Grip-Rite ProWrap® Butyl Flex Flashing onto the rough opening surface. Leaving the remaining section of the release paper in place, fold down the Grip-Rite ProWrap® Butyl Flex Flashing to facilitate the window installation; the Grip-Rite ProWrap® Butyl Flex Flashing will be adhered to the building envelope following installation of the WRB. (Fig. 2)

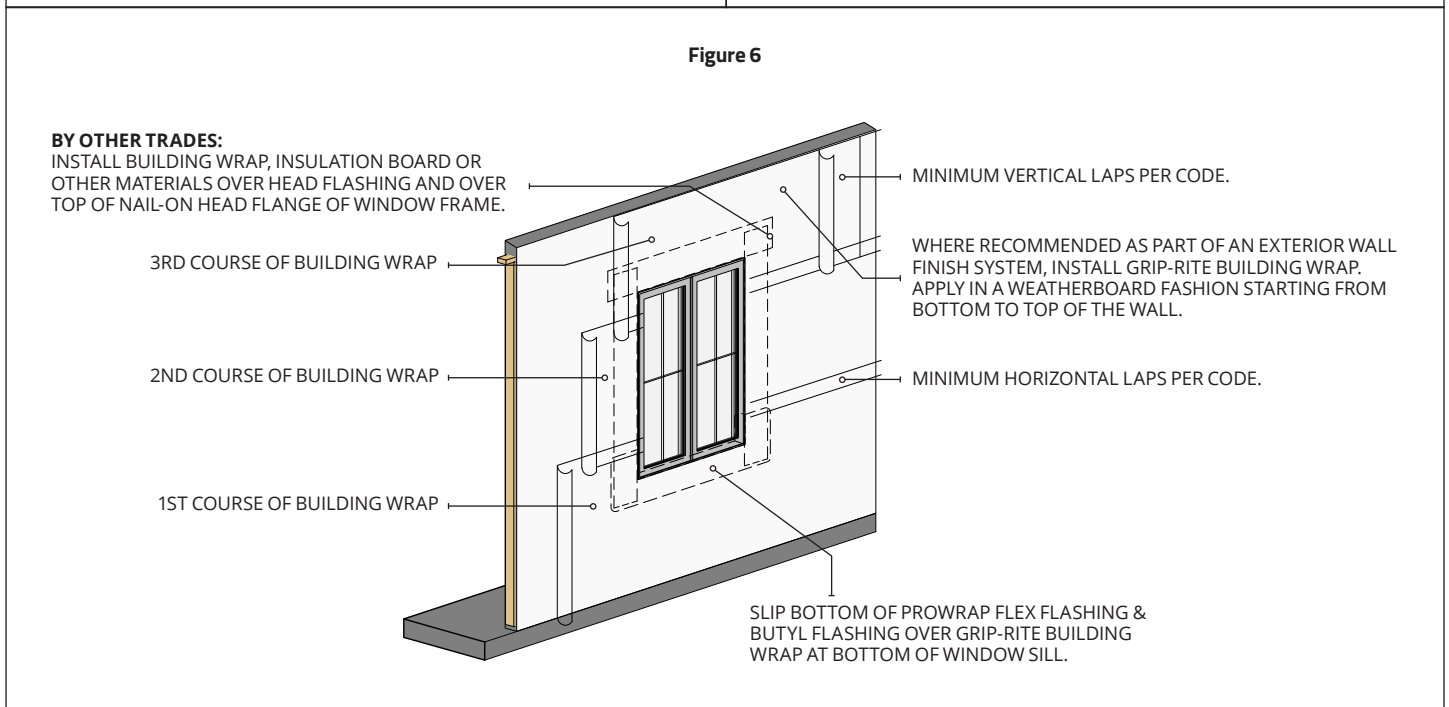
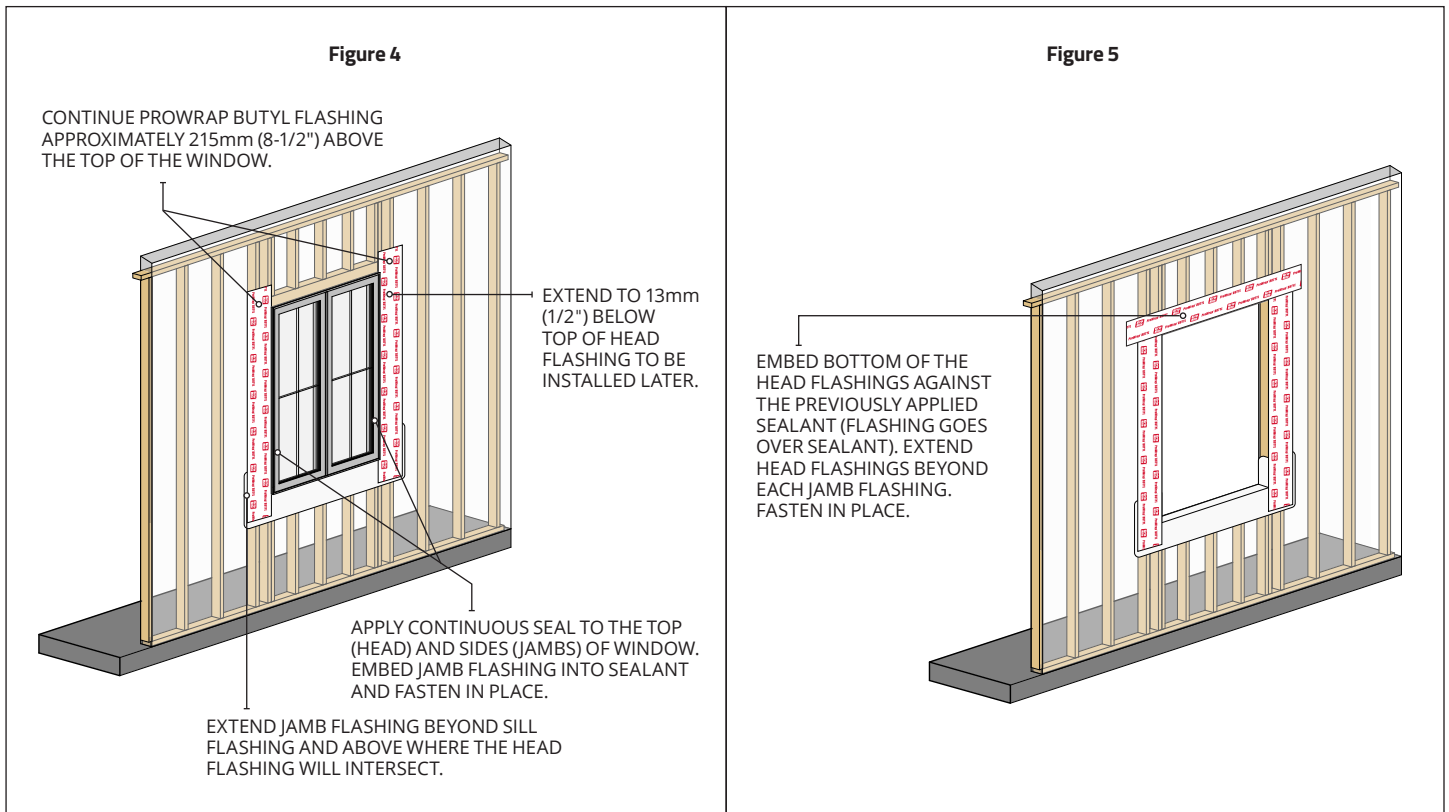
3. Apply a sealant approved by PrimeSource to the interior nailing flange on three sides (jamb and head) as per manufacturer's recommendation. Install window as per manufacturer's recommendation. (Fig. 3)



NOTE: In applications where wall sheathing is used, sheathing shall be applied prior to flashing and window installation.

4. Apply the pre-cut jamb flashing onto the nailing flange, extending the jamb flashing 1-inch above the window head flange and below the bottom edge of the sill flashing. Repeat for the other jamb section. Roll or press firmly into place. (Fig. 4)
5. Install the pre-cut flashing over the window head flange by removing release paper. Roll or press firmly into place. Mechanically fasten head flashing at top outermost corners, as necessary. (Fig. 5)
6. Install WRB as per manufacturer's recommendations, ensuring that the WRB, windows, sealants and flashings shall be constructed in a

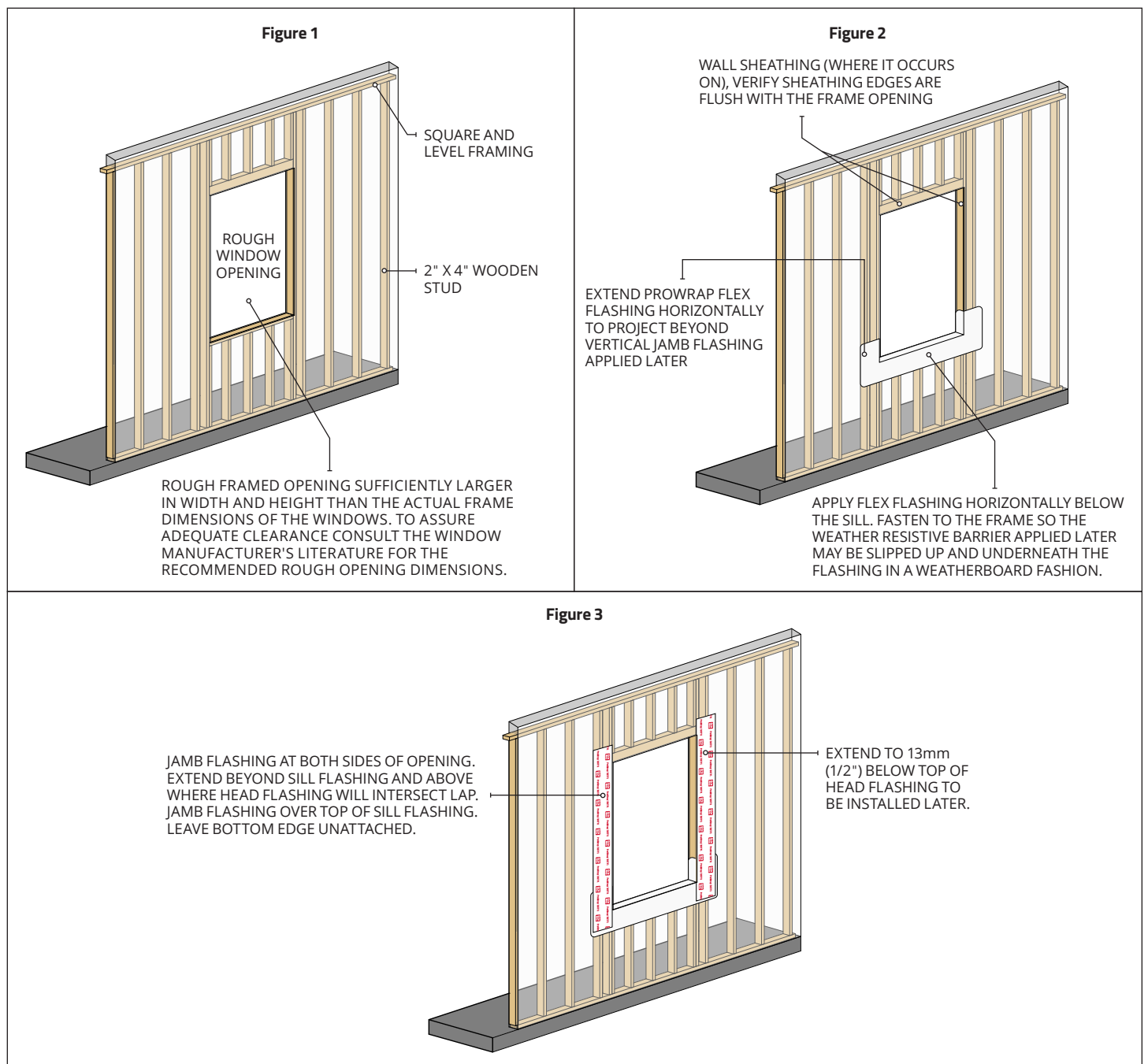
manner that prevents the accumulation of water within the wall assembly by providing a means of draining to the exterior water that penetrates the exterior cladding such that all laps shed water. All overlaps should be shingle fashion, working from the low point to the high point of the wall assembly. Position WRB under sill flashing. Remove remaining half of the release paper from the sill flashing. Roll or press firmly to adhere to WRB to ensure a water shedding tie-in, pushing the flexible tape out from the jamb-sill corners in a smooth fashion to prevent wrinkling and ensure adequate adhesion. (Fig. 6)



NOTE: In applications where wall sheathing is used, sheathing shall be applied prior to flashing and window installation.

WINDOW INSTALLATION METHOD B: AFTER WEATHER-RESISTIVE BARRIER

- Following the installation of the WRB, cut and remove the WRB from rough opening of windowsill in an "I" pattern, cutting along the top header and lower jamb edges of the rough opening and vertically at the center point of the rough opening. Make two (2) 45-degree cuts extending outward from the jamb-head corner of sufficient height to allow the width of the jamb flashing to be installed. Fold up the WRB flap at the header location and temporarily secure to allow for flashing installation. (Fig. 1)
- Pre-cut the Grip-Rite ProWrap® Butyl & Flex Flashing using the formulas provided in section 'BEFORE INSTALLING GRIP-RITE PROWRAP BUTYL & FLEX FLASHING TAPE'. (Fig. 2)
- Install the Grip-Rite ProWrap® Butyl Flex Flashing by removing the inside section of the release liner. Position Grip-Rite ProWrap® Butyl Flex Flashing along the horizontal sill, extending the outer edge of tape by 4-inches past the exterior edge of the rough opening, adhering the Grip-Rite ProWrap® Butyl Flex Flashing with a minimum of 6" up each jamb. Roll or press firmly the adhesive section of the Grip-Rite ProWrap® Butyl Flex Flashing onto the rough opening surface. Remove the remaining half of the release paper from the sill flashing. Roll or press firmly to adhere to WRB to ensure a water shedding tie-in, pushing the flexible tape out from the jamb-sill corners in a smooth fashion to prevent wrinkling and ensure adequate adhesion. (Fig. 3)



NOTE: In applications where wall sheathing is used, sheathing shall be applied prior to flashing and window installation.

4. Apply a PrimeSource approved sealant to the interior nailing flange on three sides (jamb and head) as per manufacturer's recommendation. Install window as per manufacturer's recommendation. (Fig. 4)

5. Apply the pre-cut jamb flashing onto the nailing flange, extending the jamb flashing 1-inch above the window head flange and below the bottom edge of the sill flashing. Repeat for the other jamb section. Roll or press firmly into place. (Fig. 5)

Figure 4

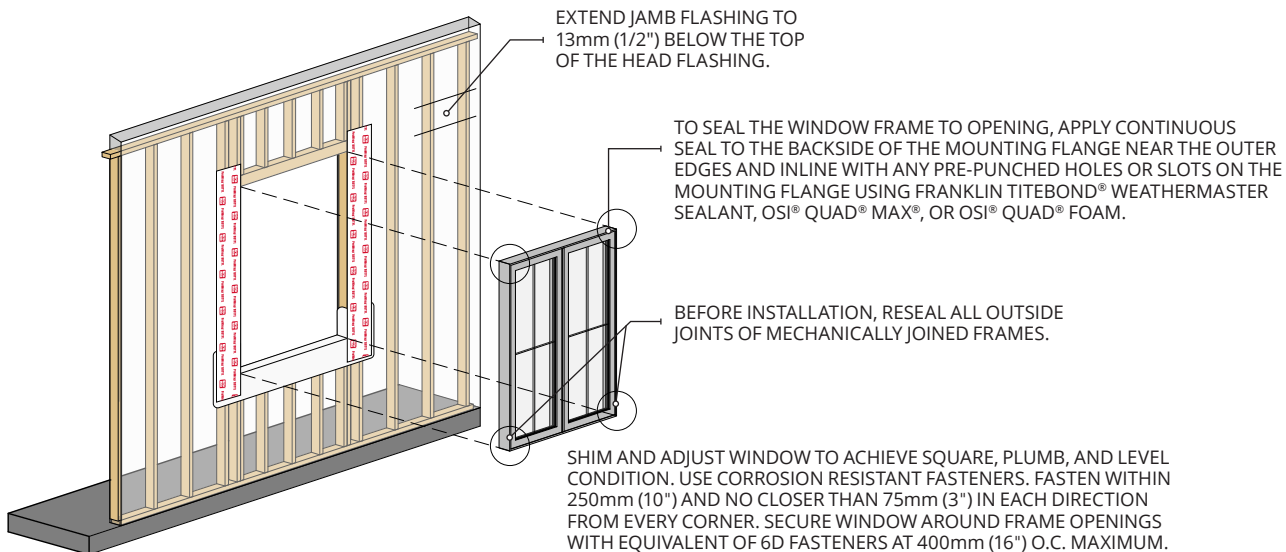
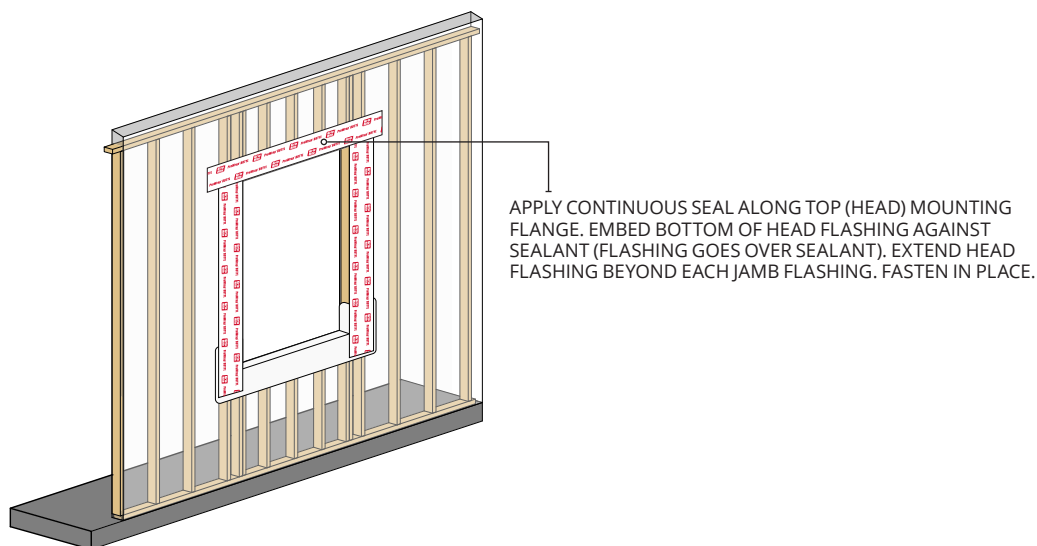


Figure 5



- Install the pre-cut flashing over the window head flange by removing release paper. Roll or press firmly into place. Carefully fold down the header flap over the header flashing. Apply ProWrap® Butyl Flashing along both diagonal cuts of the header flap, extending a minimum 4-inches past the upper most cut point. (Fig. 6)

Figure 6

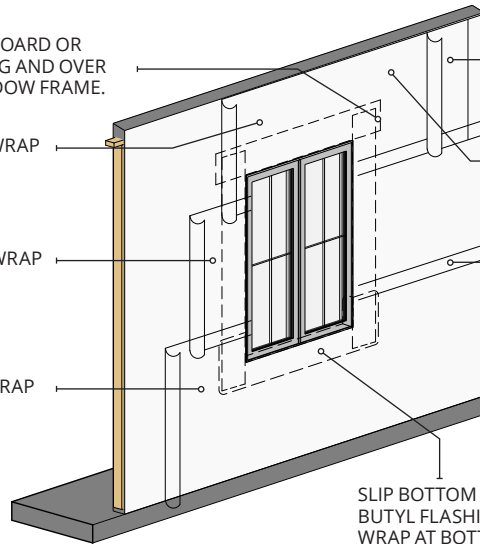
BY OTHER TRADES:

INSTALL BUILDING WRAP, INSULATION BOARD OR OTHER MATERIALS OVER HEAD FLASHING AND OVER TOP OF NAIL-ON HEAD FLANGE OF WINDOW FRAME.

3RD COURSE OF BUILDING WRAP

2ND COURSE OF BUILDING WRAP

1ST COURSE OF BUILDING WRAP



MINIMUM VERTICAL LAPS PER CODE.

WHERE RECOMMENDED AS PART OF AN EXTERIOR WALL FINISH SYSTEM, INSTALL GRIP-RITE BUILDING WRAP. APPLY IN A WEATHERBOARD FASHION STARTING FROM BOTTOM TO TOP OF THE WALL.

MINIMUM HORIZONTAL LAPS PER CODE.

SLIP BOTTOM OF PROWRAP FLEX FLASHING & BUTYL FLASHING OVER GRIP-RITE BUILDING WRAP AT BOTTOM OF WINDOW SILL.

NOTE: In applications where wall sheathing is used, sheathing shall be applied prior to flashing and window installation.

NOTE: These same steps can be used for other rough openings.

This document is provided for informational purposes only, reflecting our current understanding of best practices and technical data. Users should independently verify suitability for their specific applications. We make no express or implied warranties regarding performance or results. All recommendations should be reviewed alongside our terms of sale. Nothing in this guide is intended to infringe upon any patent, copyright, or third-party rights.

For specific information on applicable limited warranties for Grip-Rite ProWrap® Butyl & Flex Flashing, please visit <https://grip-rite.com/resources/warranty/>.



A PrimeSource Brands Company



Contact your PrimeSource Building Products representative to order today.
800-676-7777 | primesourcebp.com